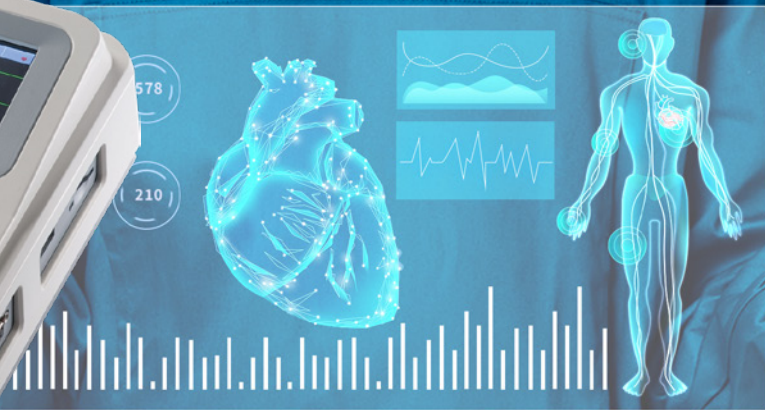


# 3-CHANNEL ELECTROCARDIOGRAPH

touching for life



**SE509**

- 4.3" Vivid color Full Touch screen
- 12 leads ECG simultaneous acquisition and display
- Built-in high resolution thermal printer with various report printing
- Unique algorithm for automatic measurements and interpretation with more than 140 kinds of Diagnosis analyze category
- Both SD and USB memory enlarge available



CE 0123

**SINOHERO**

## Size and Weight:

Product size: 31.5x21.5x7.5cm  
Packing size: 41x33x24cm  
Net weight: 1.6kg  
Gross weight: 4.3kg  
Display: 4.3" 480×272 TFT LCD

## Environmental:

Operating: Temperature: 5℃ ~ 40℃  
Relative humidity: 25% ~ 93%  
Atmospheric pressure: 700hPa ~ 1060hPa  
Transportation and storage: Temperature: -20℃ ~ +55℃  
Relative humidity: 25% ~ 95%  
Atmospheric pressure: 500hPa ~ 1060 hPa

## Safety:

Safety Type: Class I, Type CF  
Mode of operation: Continuous

## Power supply:

AC: 100V-240V AC, 50Hz/60Hz  
Comply with IEC 60601-1 and IEC 60601-1-2  
DC: 11.1V, 2000mAh Rechargeable lithium ion battery  
Operating time Used continuously for 3.5 hours  
(print 200 shares of cardiogram)  
Charge time: 4 hours  
Circle times: ≥300 times, ≥80% leave

## Recorder:

Recording way: Thermal dot array  
Horizontal resolution: 40 dots/mm (25mm/s)  
Vertical resolution: 8 dots/mm  
Recording speed: 5 mm/s, 6.25 mm/s, 10 mm/s,  
12.5 mm/s, 25 mm/s, 50 mm/s,  
Error: ±3%.  
Recording linearity: ≤0.5mm/30m  
Paper width: 72mm  
Paper type: Reel thermosensitive printing paper  
Recording precision: ±5% (X axes), ±5% (Y axes)  
Recording type:  
Auto (4×3, 3×4+1, 3×4, 2×6+1, 2×6, 3-2+1, 3-2)  
Manual (Manual1, Manual 2, Manual 3, Manual 4),  
Rhythm (single-lead rhythm, three-leads rhythm).

## Measure and Diagnosis:

HR range: 30bpm -350bpm

HR precision: ±1bpm (10s average)

Measure info of ECG waveform:

P time limit, PR interphase, QRS time limit, QT interphase,  
QTC interphase, RR interphase, RV5swing, SV1swing,  
RV6swing, SV2swing, RV5+SV1swing, P axis, QRS axis ,  
T axis.

Diagnosis analyze category: ≥140 kinds

## ECG Collection:

Signal input: 12-Lead, defibrillator-proof, Pacemaker pulse  
Response to frequency: 0.05Hz~150Hz (-3dB)  
Baseline filter: 0.05Hz, 0.15Hz, 0.25Hz, 0.5Hz  
ECG filter: 25Hz, 35Hz, 45Hz  
Lowpass filter: 75Hz, 100Hz, 150Hz  
Gain selection: 2.5, 5, 10, 20 (mm/mV)  
Gain accuracy: ≤5%  
Time base selection: 5 mm/s, 6.25 mm/s, 10 mm/s,  
12.5 mm/s, 25mm/s, 50mm/s  
Input impedance: ≥50MΩ (10Hz)  
Current of input loop: ≤50nA  
Patient's leakage current: ≤10μA  
CMRR: ≥109dB (with AC filter)

## Input/Output:

USB connector: USB Host (1) connects USB device  
SD card connector: Standard SD card (1)

## Storage:

Fixed Memory: 50 groups of ECG data  
Optional Memory: SD card or U disk  
Storage mode: Background storage automatically  
SD-U disk-Fixed memory (optional)



Specification subject to be changed without prior notice.