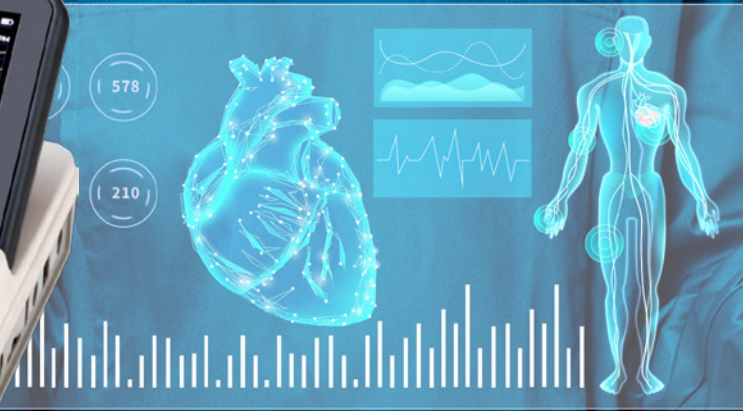




6-CHANNEL ELECTROCARDIOGRAPH

touching for life



SE608

- Sharp 7 " color TFT with Alpha-numeric keyboard
- 12 leads of ECG Simultaneous acquisition and presentation
- Simultaneous 6 leads of ECG printing with 110mm thermal paper
- Multiple USB port for connecting PC-ECG software and external printer
- Built-in rechargeable lithium battery
- 1000 ECG event reports in XML/PDF/BMP format, and convenient for Software upgrading automatically
- Excellent ECG auto-interpretation program and Pacemaker detection
- Reliable and fast Network connectivity and data transmission



Display: 800x480 pixel TFT LCD

Size and weight

Product size: 31x24.4x6.5cm

Packing size: 39x20x37cm

Net weight: 2.25g

Gross weight: 4.5kg

Sample Rate: Normal:1000sps/channel

Pacemaker: 10,000sps/channel

Pacemaker Detection: $\geq \pm 2$ mV $\geq \pm 0.1$ ms

Input Circuit: Built-in defibrillator protection

Lead: Standard 12 leads

Acquisition Mode: Simultaneous 12 leads acquisition

Measurement Range: ± 5 mVpp

Time Constant: ≥ 3.2 s

Frequency Response: 0.05Hz-150Hz (-3dB)

Sensitivity: 2.5, 5, 10, 20 mm/mV

Input Impedance: ≥ 50 M Ω

Input Circuit Current: < 0.05 μ A

Noise Level: < 15 μ Vp-p

Anti Baseline Drift: Automatic

Patient Current Leakage: < 10 μ A (220V-240V)

EMG Filter: 25 Hz / 30 Hz / 40Hz

DFT Filter: 0.05 Hz / 0.15 Hz / 0.25 Hz / 0.32 Hz / 0.5 Hz / 0.67Hz/ ADS

AC Filter 50 / 60Hz

Low Pass Filter: 75 Hz / 100 Hz / 150Hz

CMRR: 100dB

Recording Mode: Automatic: 3CH, 1CH+1R

Manual: 3CH, 1CH+1R, 1CH

Rhythm: Any lead selectable

Safety Standard: IEC I/CF

Interface: Network interface, USB Master/Slave, SD card

Power Supply: AC:100-240V, 50/60Hz, 30VA-100VA

DC:14.8V/2200mAh, built-in lithium battery

Recording System: Thermal matrix printing

Recording Paper: Roll: 110mmx20m

Paper Speed: 5 mm/s, 6.25mm/s, 10 mm/s, 12.5 mm/s, 25 mm/s, 50mm/s

Specification subject to be changed without prior notice.